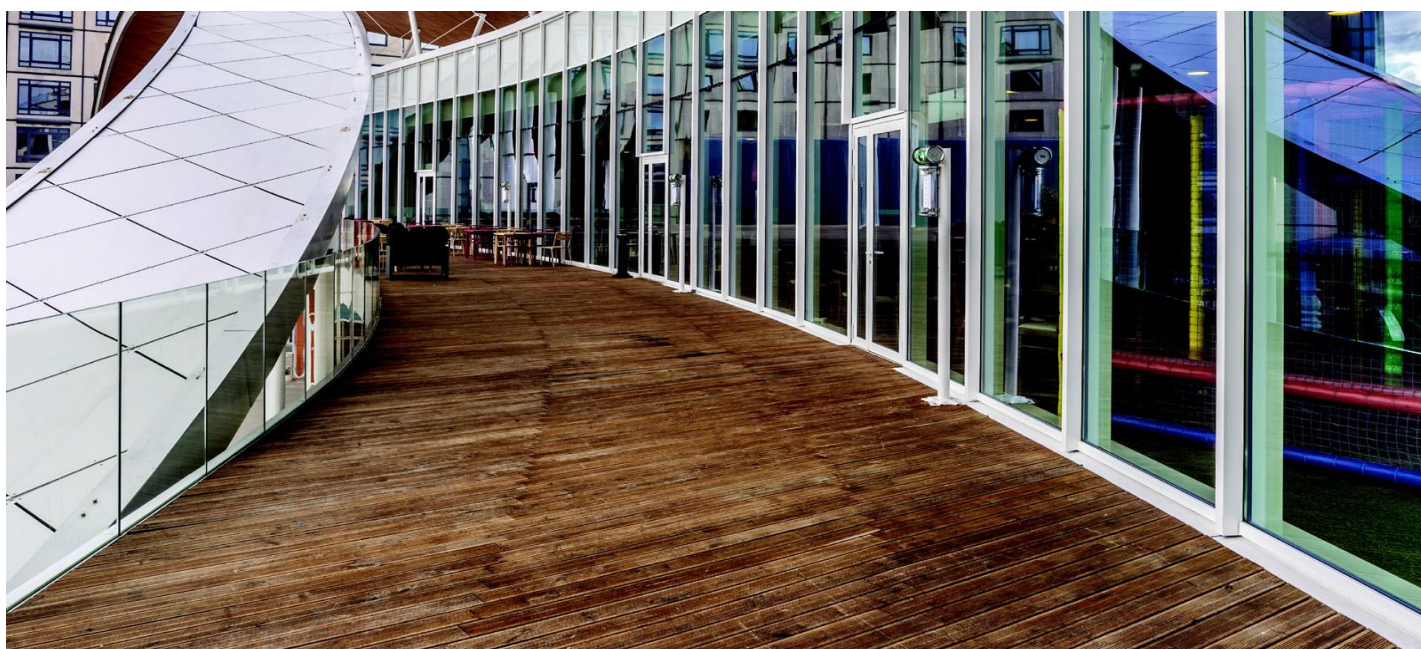


# COOL-LITE® SKN 145



## Descriere

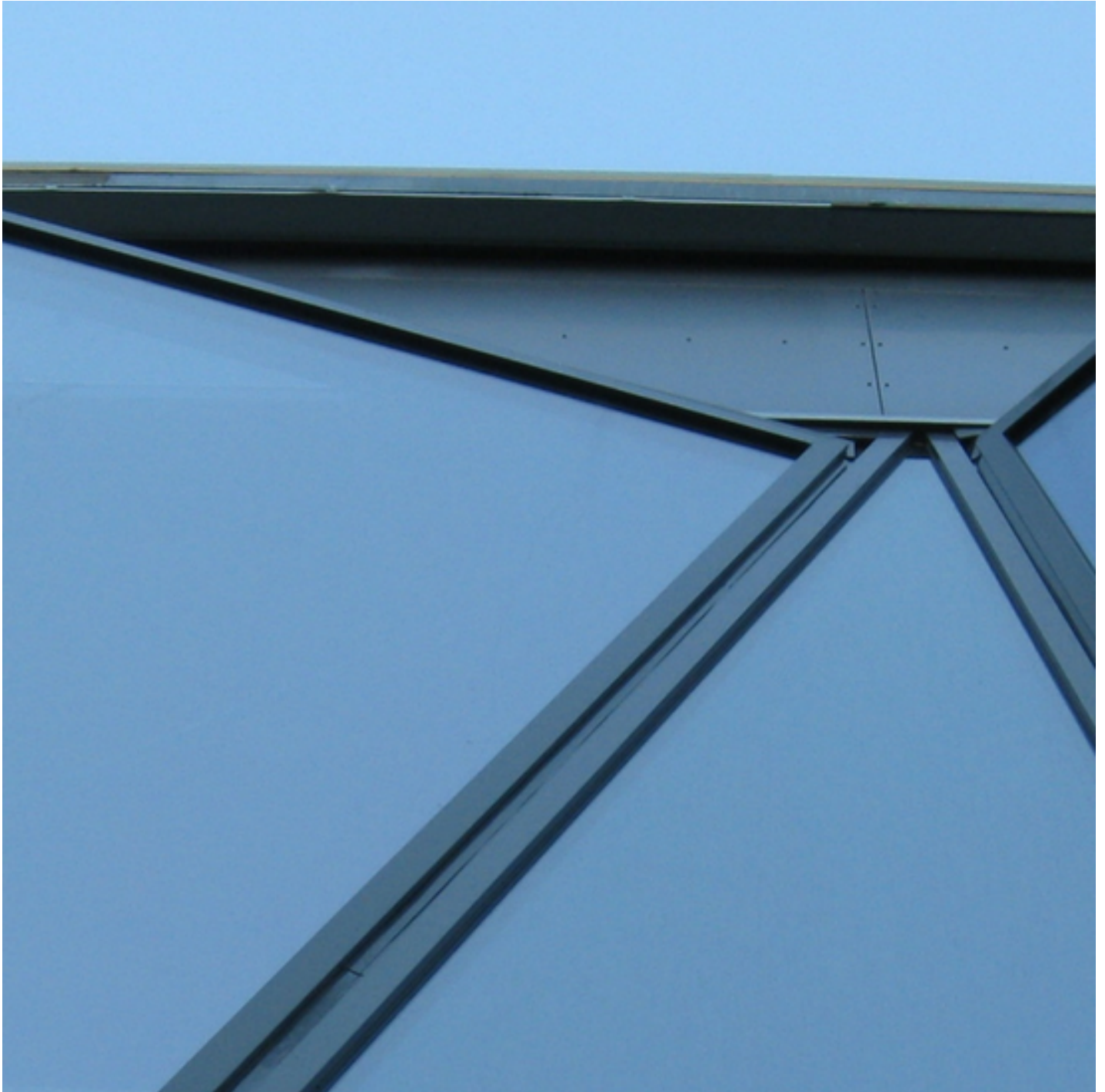
## Performan??

Valori conform standardelor EN 410 & EN 673 – 201

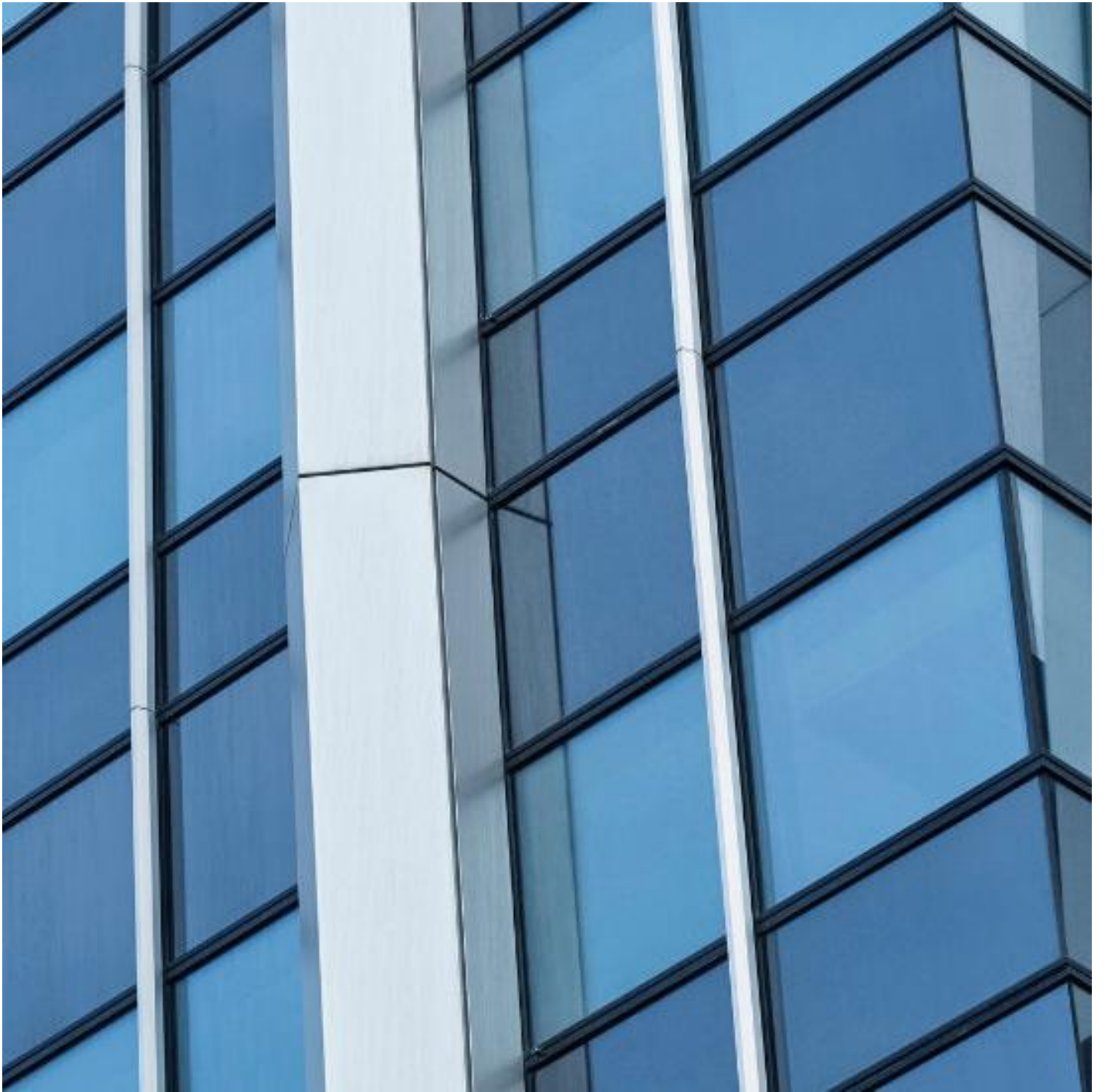
Substrat	PLANICLEAR®	
Culoarea în reflexie	Neutru-albastru	
LT (%)	41	
Factor solar g-value	0,22	
Coeficient de umbrire SC	0,25	
Selectivitate LT / g	1,86	
Reflexie externa LRe (%)	19	
Index de redare a culorii, Ra	89,5	
Ug-Value (EN 673) W/m2.K)	1,1	
Poate fi folosit ca vitraj monolitic (depunerea pe suprafata #)	NA	
Pozi?ia depunerii în DGU	#2	
Procesare	Temperabil	NA
	Laminare (depunerea #2 în laminat)	NA

Îndoire; Curbare	NA
Serigrafie/Emailare	NA

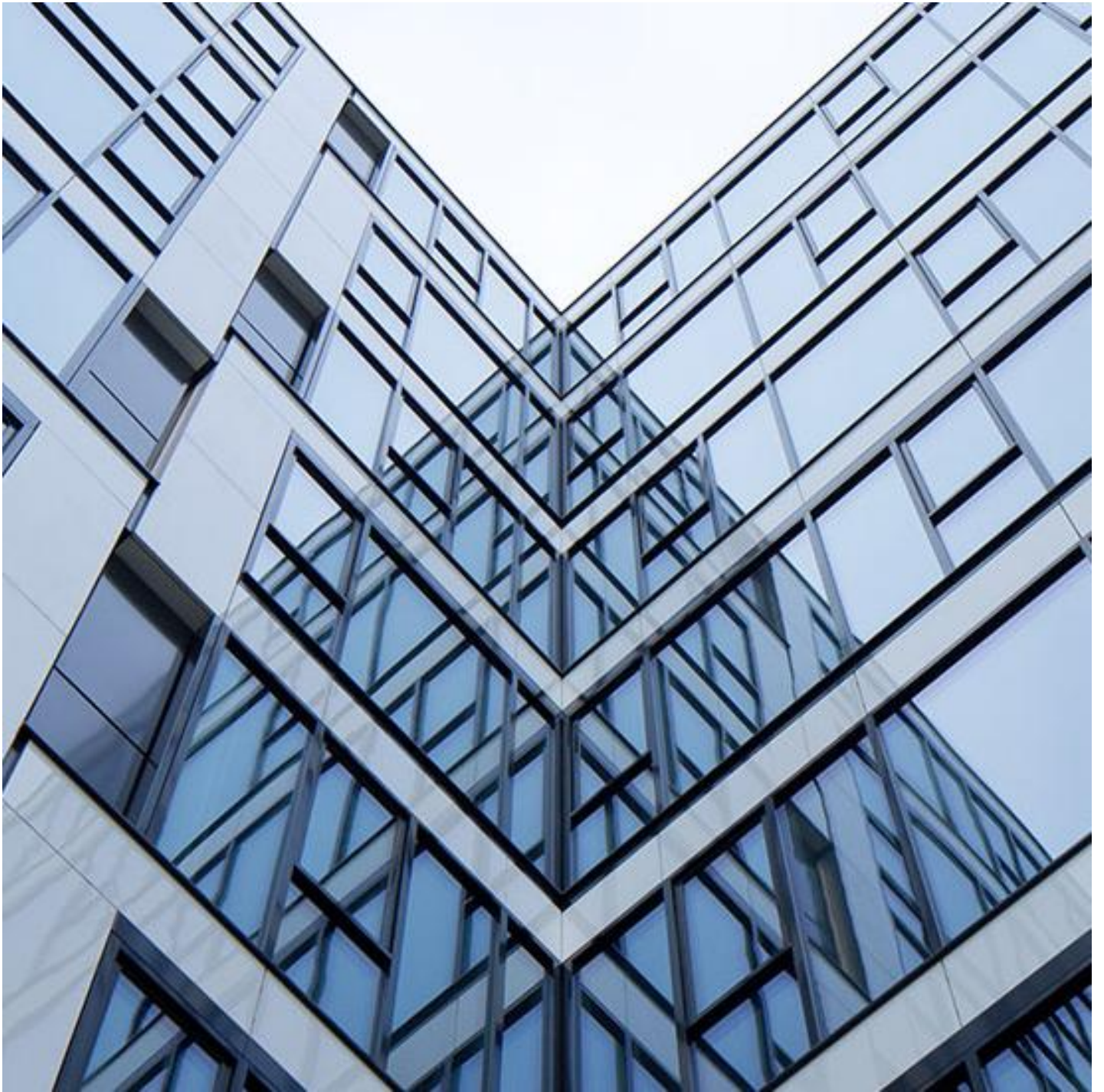
## Alte produse din gama COOL-LITE® SKN



COOL-LITE SKN 154, 154 II, 054, 054 II



COOL-LITE SKN 165 / 165 II / 065 / 065 II



COOL-LITE® SKN 176 / 176 II / 076 / 076 II